

How to open the cards or cash TOTM

1

Unlock the top lock first. Insert the lifting tool to raise the cover of the key slot. When the key slot is exposed, insert the key.



2

Turn the key left 90 degrees. This will automatically display the log in screen.

3

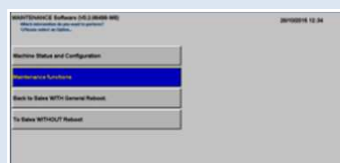
Enter the 4 digit User ID followed by the 4 digit Secret Pin.

Note the screen is dynamic so numbers will move automatically after each entry.



4

Wait until the Maintenance Function screen is displayed.

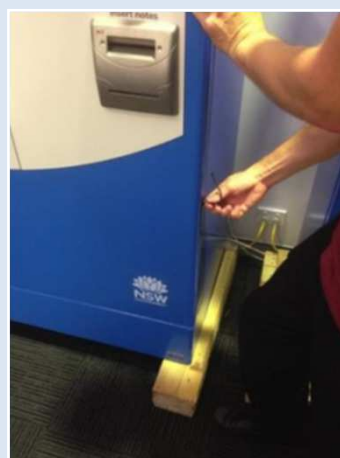


5

You are now logged on and can safely open the TOTM door.

6

Fully unlock top lock and remove key.



7

Unlock bottom lock. Insert the lifting tool to raise the cover of the key slot. When the key slot is exposed insert the key.

8

Turn key to the left anti-clockwise and unlock bottom lock.

9

Open the TOTM door and secure with foot bracket.

