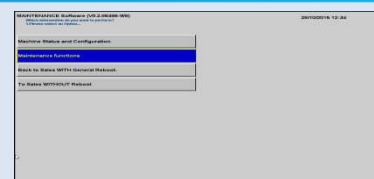


Check consumables for Paper Receipt Status

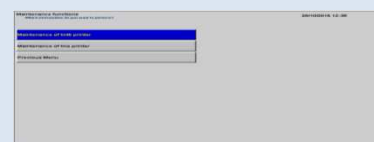
1

Select **Maintenance Functions**.



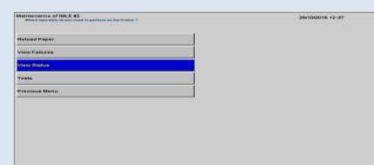
2

Select **Maintenance of ImL5 printer**. (*The IML5 printer is the receipt printer*)



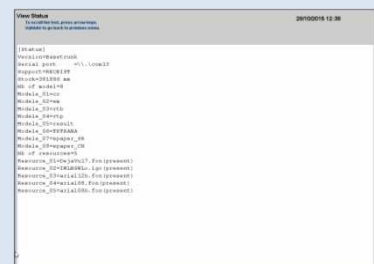
3

Select **View Status**



4

Status displays. Look for the **Stock line**. *In this example Stock = 381886mm (NB: receipt roll holds 400 m in total)*

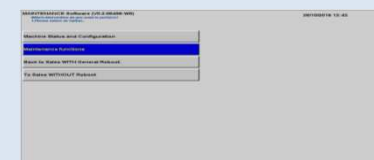


5

Touch anywhere to return to previous menu if using the touch screen or select ENTER if using the numeric pad.

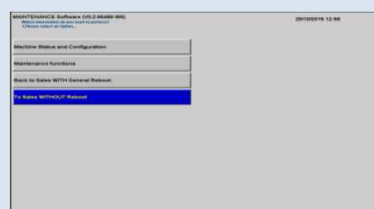
6

Select **Previous Menu** twice. **Close** the machine as per open/close instructions



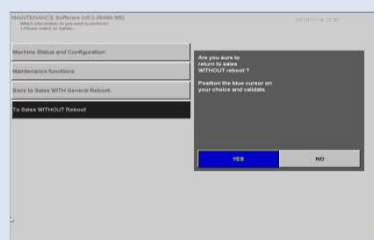
7

End activity by selecting **"To Sales WITHOUT reboot"**.



8

Select **YES** when asked *"Are you sure to return to sales WITHOUT reboot?"*



9

Wait for TOTM to reboot. Carry on with business as usual .